

AMT Instruction Manual



AUTOMAG II

.22 RIMFIRE
MAGNUM



ARCADIA MACHINE & TOOL, INC.-6226 Santos Diaz St., Irwindale, CA 91702

AUTOMAG II

GENERAL FEATURES

OVERALL LENGTH / 9-1/2 inches with 6 inch barrel

COMPLETE PISTOL WEIGHT WITH 6" BARREL — 33 ounces

STATEMENT OF LIABILITY

WARNING:

This pistol is classified as a dangerous weapon and is surrendered by AMT with the understanding that the purchaser assumes all liability resulting from unsafe handling or any action that constitutes a violation of any applicable laws or regulations. AMT shall not be liable for personal injury or loss of property or life resulting from the use of this pistol under any circumstances, including intentional, reckless, negligent or accidental discharge.

Further, AMT will not be liable for any alterations to the pistol or any parts thereof. AMT will not condone or authorize any changes to be made after the pistol has left the factory. If your AMT pistol is in need of service or adjustment, follow the instructions in this manual under the section marked "SERVICE".

Please read the warnings in this manual carefully. Be sure you understand the functions of this pistol before loading and firing it. Carefully read the "SAFETY" section of this manual. Practice safe handling of this pistol until you are thoroughly familiar with it.

PLEASE BE CAREFUL!

**WARRANTY VOID IF OTHER
THAN FACTORY AMMO USED.**

Wear Safety Glasses and Ear Protection at all times when shooting!



SAFETY

All AMT pistols are equipped with a safety to provide maximum security against accidental discharge. However, all firearms must be used with strict attention to the basic rules of firearms safety.

These rules are fundamental to safe and responsible firearms ownership and use. They are simple and reflect good common sense. The more you handle firearms, the more faithful you should be to these elementary rules.

1. Before you shoot, read this manual completely. Be sure you understand the operation of the firearm you intend to shoot. Study the owner's manual carefully. Rehearse the functioning of the safety until you are thoroughly familiar with it. There is no excuse for unsafe firearms handling.

If you are not familiar with the basics of firearms and the handling thereof, contact your local gun dealer, police department or the NRA for assistance in acquiring this training.

2. Always be sure that the firearm is unloaded until the moment you wish to shoot it, whether in the field or on the range. Upon completion of your shooting activity, unload the firearm completely by emptying and/or removing the magazine and then visually inspecting the chamber to be sure it is empty. Never take anyone's word that a firearm is empty — CHECK IT!

3. Never point the muzzle at anything you do not intend to shoot. Always be in control of where the muzzle is pointed, even if you happen to fall. Pointing the muzzle in a safe direction means a direction in which an accidentally discharged round won't strike the shooters or bystanders, even in the event that the bullet ricochets or passes through a wall or other barricade. This also applies to a deliberate shot at game or target. Be sure of the backstop before firing the shot.

Wear Safety Glasses and Ear Protection at all times when shooting!

4. Never drink alcoholic beverages or take medication that may impair your judgement while engaged in shooting activities. This is as criminal and dangerous as drunk driving.

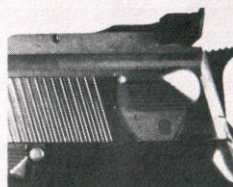
5. Always wear adequate hearing protection and safety glasses while engaged in shooting activities and encourage others near you to do likewise.

SAFETY OPERATION

In the safe position Fig. 2 the safety stops the hammer from contacting the firing pin and also blocks the firing pin, the safety does not stop the hammer from falling when the trigger is pulled. Fig. 1, the safety is in the off or fire position.

Warning: The user should never depend on a safety mechanism or any other mechanical device to justify careless handling or permitting the pistol to point in an unsafe direction.

PHOTO OF SAFETY



SAFETY OFF

Fig. 1



SAFETY ON

Fig. 2

WARNINGS

This is an auto loading pistol and is immediately loaded and ready to fire again after each shot until all cartridges in the magazine have been fired.

This pistol will fire both with and without the magazine in place. Removing the magazine does not unload the chamber or engage the safety. These operations are described elsewhere in this manual.

LOADING AND FIRING

Before performing the following operations, read this manual completely.

Prior to loading this pistol, check the bore to be sure it is free from excessive oil and unobstructed. Firing the pistol with any obstruction in the bore may cause serious injury to the shooter and damage the pistol.

TO LOAD:

Warning: Cartridges must be fed from magazine, never load cartridges directly into chamber.

1. Place the thumb safety in the "SAFE" position. When positioned properly, the RED DOT will NOT be visible (Fig. 2).

Wear Safety Glasses and Ear Protection at all times when shooting!

2. Pushing the serrated magazine latch to the rear will release the magazine for loading.

3. Carefully load the magazine, being sure that all cartridges lie evenly and parallel to the magazine tube.

Be sure to use only CLEAN .22 Rimfire Magnum Ammo. Ammunition carried in a pocket will surely collect dirt and lint that will lead to malfunction of the pistol.

4. Insert magazine into pistol being sure that magazine latch locks magazine in place. Do not drive magazine in place forcibly as this may change the contour of the feed lips and impair feeding. If the magazine does not lock in place readily, remove the magazine and be sure that all cartridges are positioned properly in the magazine tube. Then re-insert magazine.

5. Hold the pistol in the shooting hand, being sure that you do not touch the trigger. With your other hand, pull the slide all the way to the rear and release it quickly. Do not lower the slide slowly as this may cause a cartridge to feed improperly and jam the pistol.

6. Moving the safety to the "FIRE" position, Fig. 1 renders the pistol ready to be fired. Squeezing the trigger fires the round in the chamber, after which it is ejected and another round loaded into the chamber. If you do not intend to fire the next shot immediately, return the safety to the "SAFE" position until you are ready to fire again.

After firing the last shot, the slide stop will hold the slide in the open position. EXAMINE THE CHAMBER AND BE SURE IT IS EMPTY!

Warning: Because of the thin metal used in the .22 Magnum Rimfire cartridges, care should always be taken when loading, unloading and feeding cartridges into chamber. Any cartridges that do not feed smoothly and reliably into chamber should not be used, because they may discharge before entering the chamber. Do not load any other type of .22 caliber cartridge or shot shells into magazine or chamber of this pistol.

Always wear shooting glasses when firing the pistol to avoid possibility of injury from ejected cases and particles of powder.

CLEARING A JAM

In the event that a cartridge does not feed into the chamber, (jams), do not force the slide shut. This may cause the cartridge to fire and injure the shooter or bystanders and damage the pistol. Following is the proper procedure for clearing the jammed pistol:

1. Be sure that muzzle is pointed in a safe direction.
2. Engage the safety.
3. Carefully remove the magazine.

Wear Safety Glasses and Ear Protection at all times when shooting!

Pull the slide to its rear-most position and lock it open by pushing up on the slide stop. Do not look into the ejection port during this operation. If drawing the slide all the way back does not pull the cartridge along with it, it may be necessary to use a small wood or plastic dowel, sharpened on one end, to gently remove the cartridge from the chamber and ejection port. Do not use a metal tool. This may detonate the cartridge or mar the pistol.

4. Carefully inspect the pistol to be sure that a cartridge did not become lodged in the magazine well of the grip frame.

5. Reinsert magazine and repeat the steps necessary to load the chamber and fire.

UNLOADING

After completion of the shooting session, the following procedure should be carried out exactly as described to unload the pistol.

If the last shot in the magazine has been fired, the slide should be in the open position. Engage the safety Fig. 2 then remove the magazine. Carefully inspect the magazine and the chamber to be sure they are empty.

Pull the slide all the way back to disengage the slide stop, then slowly let it return to its forward position. Point the pistol in a safe direction, and let hammer down by holding hammer with thumb and pulling trigger then ease hammer down until it contacts safety.

If all the cartridges in the magazine have not been fired and a round is in the chamber, the following procedure must be followed to unload the pistol. Failure to follow this procedure may result in the chamber being inadvertently loaded. Being sure that the muzzle is pointed in a safe direction.

1. Push the safety to the "SAFE" position.
2. Remove the magazine.

Because the operation of this pistol is based upon recoil energy functioning, it is necessary to . . .

3. Retract the slide forcibly to extract the cartridge from the chamber, and eject it out the ejection port. Drawing the slide back slowly may result in the cartridge falling in the magazine well and becoming lodged in the frame of the pistol. When you are certain that the chamber is empty, lower the slide to its forward position. Point the muzzle in a safe direction, lower the hammer by holding the hammer with thumb and pulling the trigger, then ease the hammer down until it contacts the safety.

TAKEDOWN FOR CLEANING

Before you start be absolutely certain that the pistol is unloaded, NEVER work on a loaded firearm.

1. Remove magazine, pull the slide completely to the rear position, check the chamber to be sure it is empty.

Wear Safety Glasses and Ear Protection at all times when shooting!

2. With slide stop in the upper or locked open position, push slide stop out from right to left, while holding the slide until slide stop is out, then let slide move forward.
3. Put safety in fire position, and remove slide and barrel assembly by pushing it towards the front of pistol.
4. To remove barrel from slide depress recoil rod bushing to clear barrel bushing then rotate barrel bushing counter clockwise 45° and it will come out of the slide. The recoil spring is under tension so care should be taken not to let bushing and spring fly out.
5. After removal of recoil rod and recoil spring, barrel can be removed from bottom of slide, at this point, slide and barrel can be cleaned, never use anything that may score or scratch bore or chamber area. DO NOT disassemble the grip frame. If the components within the grip frame need service for any reason, return the pistol to the factory. See "SERVICE" section of this manual for instructions.

Never let hammer fall when slide is off of frame, this may cause damage to hammer strut and hammer, ejector is held in place by slide. So care should be taken when slide is removed.

RE-ASSEMBLY

1. Put barrel into slide thru the bottom of slide, insert recoil rod and spring, with recoil rod bushing on recoil spring compress spring until flush with front of slide. Then install barrel bushing until fully against slide, rotate to locked position.
2. Install ejector in frame, cock hammer, then install slide assembly onto frame (with safety in fire position) align hole in frame with barrel tang. Care should be taken not to push slide and barrel past the point where the hole lines up for slide stop and barrel tang, this could bend the trigger return spring and cause tension to be lost. Then insert slide stop. After installing slide stop halfway, pull slide to the rear position, push slide stop in and up until it is fully engaged, then release slide stop and slowly let slide forward to closed position.

CLEANING

Frequency of cleaning depends upon the frequency of use of the pistol. Accumulation of powder fouling and bullet lubricant in the breech and chamber area may effect the functioning of the pistol causing jamming or misfiring. If either of these conditions develop, clean the pistol before assuming that something is wrong with it.

All areas of the breech, slide, magazine, chamber and bore should be scrubbed or wiped clean with a cleaning patch wetted with a powder solvent. After all areas have been thoroughly cleaned, wipe again with an oiled cloth.

Wear Safety Glasses and Ear Protection at all times when shooting!

Though this pistol is made of high-quality stainless steel, a light coating of surface rust may develop over a period of time, especially in areas of high humidity. This is a very thin surface coating and can be removed with a rust preventive solvent and a clean cloth.

SIGHT ADJUSTMENTS

The adjustable rear sight is provided, with elevation and windage adjustments. The adjustment screw should be turned to move the sight blade in the direction that you wish the bullet to strike. For example, turning the windage adjustment screw counter clockwise moves the sight blade to the left and impact of the bullet to the left.

SERVICE

Prior to shipment, each AUTOMAG II pistol is carefully inspected and test fired to ensure that it is in proper operating condition. Should the pistol require adjustment, repair or refinishing, we recommend that the pistol be returned directly to the factory SERVICE DEPT. There is no other way to be sure that work is performed in a properly equipped and staffed facility. Failure to use the factory services could result in voiding your warranty.

Except for guns still under warranty, all work will bear a net minimum charge of \$15.00.

All pistols returned are to be sent prepaid. All collect shipments will be refused.

For best service, always enclose a cover letter with the pistol furnishing serial number, model of pistol and the nature of the problem or work desired. A statement that the pistol is "defective" is not adequate and will only result in unneeded delays. Try to be as specific as possible.

Federal regulations control the shipment of firearms. It may be impossible for the factory to return a pistol directly to you. Check your local regulations before shipment. If this is the case, we recommend that all firearms be sent through a federally licensed dealer.

Please be sure that both the magazine and the chamber are empty before shipping. Any firearms received in a loaded condition must be reported to the federal authorities.

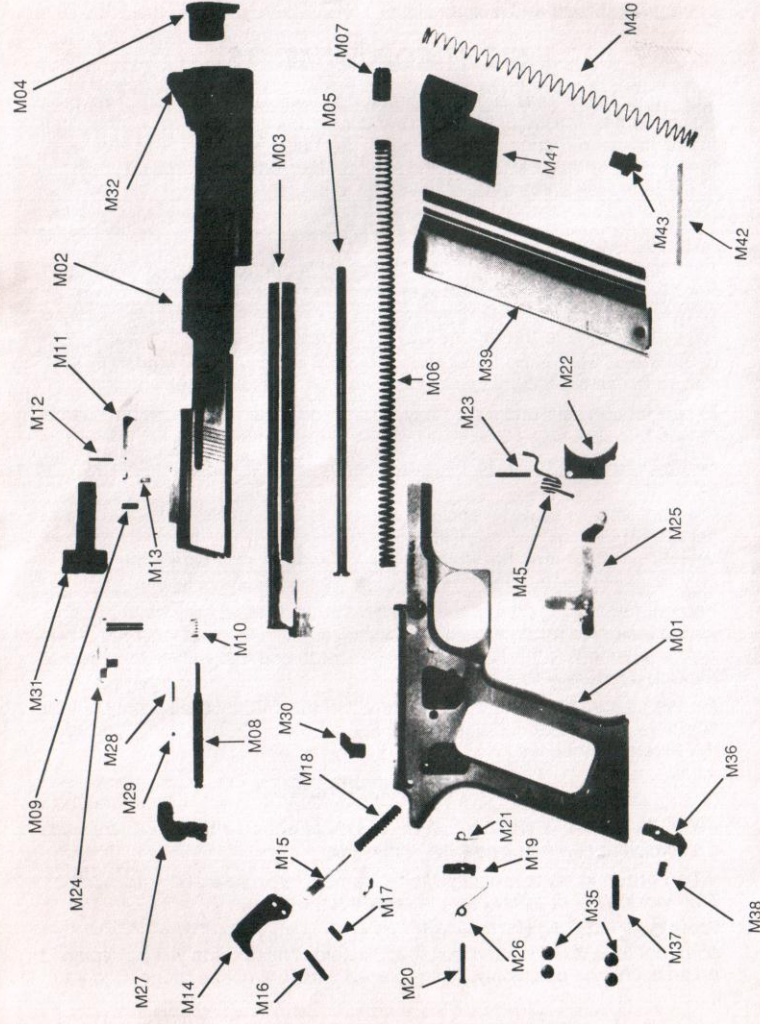
PARTS & ORDERING

All parts orders should be sent to the attention of the Parts Dept., California residents include 6 1/2% sales tax.

When ordering parts, specify Model name, Part name and Part number. Also include the complete serial number of the firearm.

Parts designated by an (*) asterisk must be factory fitted. The price shown does not include labor and tax, if applicable. These parts will be replaced on an exchange basis only. The replaced parts will not be returned to you.

Wear Safety Glasses and Ear Protection at all times when shooting!



Part No.	Part Name	Retail Price	Part No.	Part Name	Retail Price
M01	FRAME.....	65.00	M23	TRIGGER PIVOT PIN.....	1.00
M02	SLIDE.....	65.00	M24	SLIDE STOP.....	15.00
M03	BARREL.....	78.00	M25	DISCONNECTOR.....	4.75
M04	BARREL BUSHING.....	14.00	M26	DISCONNECTOR SPRING.....	1.50
M05	RECOIL ROD.....	6.25	M27	SAFETY.....	9.50
M06	RECOIL ROD SPRING.....	4.00	M28	SAFETY DETENT SPRING.....	1.00
M07	RECOIL ROD BUSHING.....	6.50	M29	SAFETY DETENT BALL.....	1.00
M08	FIRING PIN.....	7.00	M30	EJECTOR.....	3.75
M09	FIRING PIN RETAINER.....	1.00	M31	REAR SIGHT.....	31.00
M10	FIRING PIN SPRING.....	1.00	M32	FRONT SIGHT.....	14.00
M11	EXTRACTOR.....	8.75	M33	GRIP LEFT.....	15.00 set
M12	EXTRACTOR PIN.....	1.00	M34	GRIP RIGHT.....	15.00 set
M13	EXTRACTOR SPRING.....	1.00	M35	GRIP SCREWS (4).....	1.00 each
M14	* HAMMER.....	13.50	M36	MAGAZINE LATCH.....	5.75
M15	HAMMER STRUT.....	3.75	M37	MAGAZINE LATCH PIN.....	1.00
M16	HAMMER PIVOT PIN.....	1.00	M38	MAGAZINE LATCH SPRING.....	1.00
M17	HAMMER STRUT PIN.....	1.00	M39	MAGAZINE BODY.....	10.40
M18	HAMMER SPRING.....	1.25	M40	MAGAZINE SPRING.....	1.15
M19	* SEAR.....	9.00	M41	MAGAZINE FOLLOWER.....	1.45
M20	SEAR PIN.....	1.75	M42	MAGAZINE FLOORPLATE.....	1.00
M21	SEAR SPRING.....	1.50	M43	MAGAZINE FLOORPLATE RETAINER.....	1.00
M22	TRIGGER.....	12.75	M44	TRIGGER SPRING.....	1.00
			M45	MAGAZINE COMPLETE.....	20.00
				HANDLING & SHIPPING.....	3.00

ARCADIA MACHINE & TOOL, INC. — 6226 Santos Diaz St., Irwindale, CA 91702

WARRANTY STATEMENT

BASED ON MAGNUSON, MOSS WARRANTY ACT, AMT offers no expressed warranty on its product line, AMT does recognize its obligation concerning implied warranty. AMT will continue to stand behind its products as it has in the past. AMT products will be serviced for a period of one year from date of retail purchase, for defects of material or workmanship, at no charge to the purchaser. Be sure to retain your sales slip as proof of purchase date when making a claim.

This instruction manual should always accompany this firearm and be transferred with it upon change of ownership.