

AMT Instruction Manual



AUTOMAG IV

45 WIN. MAG.
10MM MAG



GALENA INDUSTRIES * AMT
5463 Diaz Street
Irwindale, CA 91706

Irwindale, CA 91702

AUTOMAG IV

GENERAL FEATURES

OVERALL LENGTH / 10 3/4 inches, WIDTH 1 3/8 inches

COMPLETE PISTOL WEIGHT WITH 6½" BARREL - 52 ounces

STATEMENT OF LIABILITY

WARNING:

This pistol is classified as a dangerous weapon and is surrendered by *AMT* with the understanding that the purchaser assumes all liability resulting from unsafe handling or any action that constitutes a violation of any applicable laws or regulations. *AMT* shall not be liable for personal injury or loss of property or life resulting from the use of this pistol under any circumstances, including intentional, reckless, negligent or accidental discharge.

Further, *AMT* will not be liable for any alterations to the pistol or any parts thereof. *AMT* will not condone or authorize any changes to be made after the pistol has left the factory. If your *AMT* pistol is in need of service or adjustment, follow the instructions in this manual under the section marked "SERVICE".

Please read the warnings in this manual carefully. Be sure you understand the functions of this pistol before loading and firing it. Carefully read the "SAFETY" section of this manual. Always practice safe handling of this or any firearm.

PLEASE BE CAREFUL!

**WARRANTY VOID IF OTHER
THAN FACTORY AMMO USED.**

Wear Safety Glasses and Ear Protection at all times when shooting!



SAFETY

All AMT pistols are equipped with a safety to provide maximum security against accidental discharge. However, all firearms must be used with strict attention to the basic rules of firearms safety.

These rules are fundamental to safe and responsible firearms ownership and use. They are simple and reflect good common sense. The more you handle firearms, the more faithful you should be to these elementary rules.

1. Before you shoot, read this manual completely. Be sure you understand the operation of the firearm you intend to shoot. Study the owner's manual carefully. Rehearse the functioning of the safety until you are thoroughly familiar with it. There is no excuse for unsafe firearms handling.

If you are not familiar with the basics of firearms and the handling thereof, contact your local gun dealer, police department or the NRA for assistance in acquiring this training.

2. Always be sure that the firearm is unloaded until the moment you wish to shoot it, whether in the field or on the range. Upon completion of your shooting activity, unload the firearm completely by emptying and/or removing the magazine and then visually inspecting the chamber to be sure it is empty. Never take anyone's word that a firearm is empty — CHECK IT!

3. Never point the muzzle at anything you do not intend to shoot. Always be in control of where the muzzle is pointed, even if you happen to fall. Pointing the muzzle in a safe direction means a direction in which an accidentally discharged round won't strike the shooters or bystanders, even in the event that the bullet ricochets or passes through a wall or other barricade. This also applies to a deliberate shot at game or target. Be sure of the backstop before firing the shot.

Wear Safety Glasses and Ear Protection at all times when shooting!

4. Never drink alcoholic beverages or take medication that may impair your judgement while engaged in shooting activities. This is as criminal and dangerous as drunk driving.

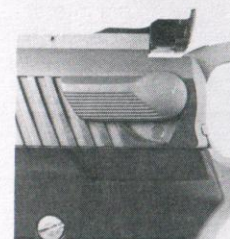
5. Always wear adequate hearing protection and safety glasses while engaged in shooting activities and encourage others near you to do likewise.

SAFETY OPERATION

In the safe position Fig. 2 the safety stops the hammer from contacting the firing pin and also blocks the firing pin, the safety does not stop the hammer from falling when the trigger is pulled. Fig. 1, the safety is in the off or fire position.

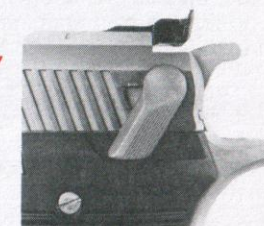
Warning: The user should never depend on a safety mechanism or any other mechanical device to justify careless handling or permitting the pistol to point in an unsafe direction.

PHOTO OF SAFETY



SAFETY
OFF

Fig. 1



SAFETY
ON

Fig. 2

WARNINGS

This is an auto loading pistol and is immediately loaded and ready to fire again after each shot until all cartridges in the magazine have been fired.

This pistol will fire both with and without the magazine in place. Removing the magazine does not unload the chamber or engage the safety. These operations are described elsewhere in this manual.

LOADING AND FIRING

Before performing the following operations, read this manual completely.

Prior to loading this pistol, check the bore to be sure it is free from excessive oil and unobstructed. Firing the pistol with any obstruction in the bore may cause serious injury to the shooter and damage the pistol.

TO LOAD:

Warning: Cartridges must be fed from magazine, never load cartridges directly into chamber.

1. Place the thumb safety in the "SAFE" position. When positioned properly, the RED DOT will NOT be visible (Fig. 2).

Wear Safety Glasses and Ear Protection at all times when shooting!

2. Pushing the magazine latch to the right will release the magazine for loading.

3. Carefully load the magazine, being sure that all cartridges lie evenly and parallel to the magazine tube.

Be sure to use only **CLEAN AMMUNITION**. Ammunition carried in a pocket will surely collect dirt and lint that will lead to malfunction of the pistol.

4. Insert magazine into pistol being sure that magazine latch locks magazine in place. Do not drive magazine in place forcibly as this may change the contour of the feed lips and impair feeding. If the magazine does not lock in place readily, remove the magazine and be sure that all cartridges are positioned properly in the magazine tube. Then re-insert magazine.

5. Hold the pistol in the shooting hand, being sure that you do not touch the trigger. With your other hand, pull the slide all the way to the rear and release it quickly. Do not lower the slide slowly as this may cause a cartridge to feed improperly and jam the pistol.

6. Moving the safety to the "FIRE" position, Fig. 1 renders the pistol ready to be fired. Squeezing the trigger fires the round in the chamber, after which it is ejected and another round loaded into the chamber. If you do not intend to fire the next shot immediately, return the safety to the "SAFE" position until you are ready to fire again.

After firing the last shot, the slide stop will hold the slide in the open position. **EXAMINE THE CHAMBER AND BE SURE IT IS EMPTY!**

Always wear shooting glasses when firing the pistol to avoid possibility of injury from ejected cases and particles of powder.

CLEARING A JAM

In the event that a cartridge does not feed into the chamber, (jams), do not force the slide shut. Following is the proper procedure for clearing the jammed pistol:

1. Be sure that muzzle is pointed in a safe direction.
2. Engage the safety.
3. Carefully remove the magazine.

Pull the slide to its rear-most position and lock it open by pushing up on the slide stop. Do not look into the ejection port during this operation. If drawing the slide all the way back does not pull the cartridge along with it, it may be necessary to use a small wood or plastic dowel, sharpened on one end, to gently remove the cartridge from the chamber and ejection port. Do not use a metal tool.

4. Carefully inspect the pistol to be sure that a cartridge did not become lodged in the magazine well of the grip frame.

5. Reinsert magazine and repeat the steps necessary to load the chamber and fire.

Wear Safety Glasses and Ear Protection at all times when shooting!

UNLOADING

After completion of the shooting session, the following procedure should be carried out exactly as described to unload the pistol.

If the last shot in the magazine has been fired, the slide should be in the open position. Engage the safety Fig. 2 then remove the magazine. Carefully inspect the magazine and the chamber to be sure they are empty.

Pull the slide all the way back to disengage the slide stop, then slowly let it return to its forward position. Point the pistol in a safe direction, and let hammer down by holding hammer with thumb and pulling trigger then ease hammer down until it contacts safety.

If all the cartridges in the magazine have not been fired and a round is in the chamber, the following procedure must be followed to unload the pistol. Failure to follow this procedure may result in the chamber being inadvertently loaded. Being sure that the muzzle is pointed in a safe direction.

1. Push the safety to the "SAFE" position.
2. Remove the magazine.

Because the operation of this pistol is based upon recoil energy functioning, it is necessary to . . .

3. Retract the slide forcibly to extract the cartridge from the chamber, and eject it out the ejection port. Drawing the slide back slowly may result in the cartridge falling in the magazine well and becoming lodged in the frame of the pistol. When you are certain that the chamber is empty, lower the slide to its forward position. Point the muzzle in a safe direction, lower the hammer by holding the hammer with thumb and pulling the trigger, then ease the hammer down until it contacts the safety.

TAKEDOWN FOR CLEANING

Before you start be absolutely certain that the pistol is unloaded, Never work on a loaded firearm.

1. Remove magazine, pull the slide completely to the rear position, check the chamber to be sure it is empty.

2. Pull slide to the rear approximately one inch then push slide stop out to the left. Slide will then come forward off the frame.

CAUTION: Do not let hammer fall without slide in place this will cause damage to the hammer strut.

3. To remove barrel from slide depress recoil rod bushing to clear barrel bushing then rotate barrel bushing counter clockwise 45° and it will come out of the slide. The recoil spring is under tension so care should be taken not to let bushing and spring fly out.

4. After removal of recoil rod and recoil spring, barrel can be removed from bottom of slide, at this point, slide and barrel can be cleaned, never use anything that may score or scratch bore or chamber area. **DO NOT** disassemble the grip frame. If the components within the grip frame need service for any reason, return the pistol to the factory. See "SERVICE" section of this manual for instructions.

Wear Safety Glasses and Ear Protection at all times when shooting!

RE-ASSEMBLY

1. Put barrel into slide thru the bottom of slide, insert recoil rod and spring, with recoil rod bushing on recoil spring compress spring until flush with front of slide. Then install barrel bushing until fully against slide, rotate to locked position. Barrel bushing should be installed before recoil spring bushing.
2. Cock hammer, then install slide assembly onto frame (with safety in fire position) align hole in frame with barrel tang. Then insert slide stop. After installing slide stop halfway, pull slide to the rear position approximately 1 inch, push slide stop in until it is fully engaged, then release slide forward to closed position.

CLEANING

Frequency of cleaning depends upon the frequency of use of the pistol. Accumulation of powder fouling in the breech and chamber area may effect the functioning of the pistol causing jamming or misfiring. If either of these conditions develop, clean the pistol before assuming that something is wrong with it.

All areas of the breech, slide, magazine, chamber and bore should be scrubbed or wiped clean with a cleaning patch wetted with a powder solvent. After all areas have been thoroughly cleaned, wipe again with an oiled cloth.

Though this pistol is made of high-quality stainless steel, a light coating of surface rust may develop over a period of time, especially in areas of high humidity. This is a very thin surface coating and can be removed with a rust preventive solvent and a clean cloth.

SIGHT ADJUSTMENTS

The adjustable rear sight is provided, with elevation and windage adjustments. The adjustment screw should be turned to move the sight blade in the direction that you wish the bullet to strike. For example, turning the windage adjustment screw counter clockwise moves the sight blade to the left and impact of the bullet to the left.

SERVICE

Prior to shipment, each AUTOMAG IV pistol is carefully inspected and test fired to ensure that it is in proper operating condition. Should the pistol require adjustment, repair or refinishing, we recommend that the pistol be returned directly to the factory SERVICE DEPT. There is no other way to be sure that work is performed in a properly equipped and staffed facility. Failure to use the factory services could result in voiding your warranty.

Except for guns still under warranty, all work will bear a net minimum charge of \$15.00.

All pistols returned are to be sent prepaid. All collect shipments will be refused.

Wear Safety Glasses and Ear Protection at all times when shooting!

For best service, always enclose a cover letter with the pistol furnishing serial number, model of pistol and the nature of the problem or work desired. A statement that the pistol is "defective" is not adequate and will only result in unneeded delays. Try to be as specific as possible.

Federal regulations control the shipment of firearms. It may be impossible for the factory to return a pistol directly to you. Check your local regulations before shipment. If this is the case, we recommend that all firearms be sent through a federally licensed dealer.

Please be sure that both the magazine and the chamber are empty before shipping. Any firearms received in a loaded condition must be reported to the federal authorities.

PARTS & ORDERING

All parts orders should be sent to the attention of the Parts Dept., California residents include applicable sales tax.

When ordering parts, specify Model name, Part name and Part number. Also include the complete serial number of the firearm.

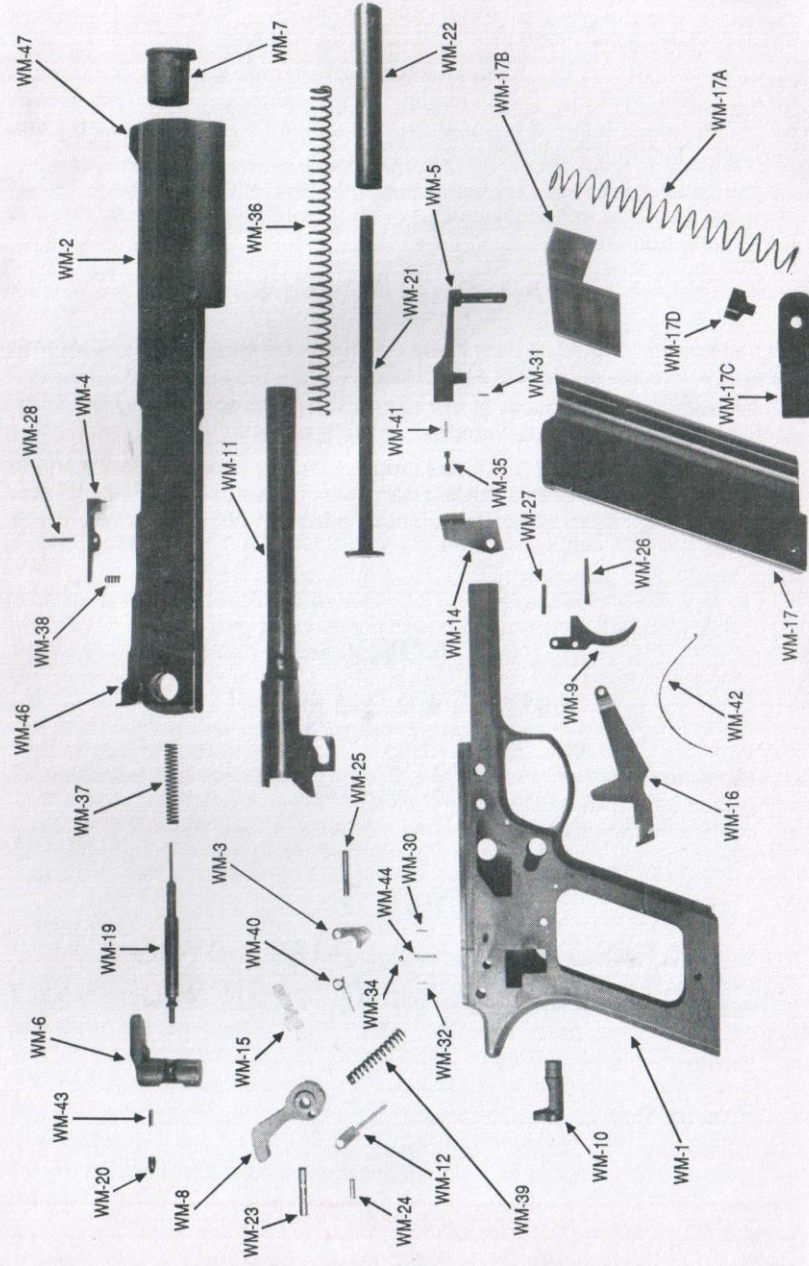
Parts designated by an (*) asterisk must be factory fitted. The price shown does not include labor and tax, if applicable. These parts will be replaced on an exchange basis only. The replaced parts will not be returned to you.

NOTE:

EXTRA 10MM MAG BRASS
AVAILABLE FROM AMT
CALL FOR COST
(818) 334-6629

**PLEASE ORDER ALL PARTS BY MAIL
INCLUDING FULL PAYMENT WHEN NECESSARY**

Wear Safety Glasses and Ear Protection at all times when shooting!



Imperative To Specify Caliber & Barrel Length When Ordering Parts

Part No.	Part Name	Retail Price	Part No.	Part Name	Retail Price
WM-1	FRAME	Dealers Only	WM-42	DISCONNECTOR SPRING	2.00
WM-2	SLIDE	110.00	WM-6	SAFETY	12.00
WM-11	BARREL (Specify)	98.00	WM-43	SAFETY DETENT SPRING	1.25
WM-7	BARREL BUSHING	15.00	WM-20	SAFETY DETENT PLUNGER	2.25
WM-21	RECOIL ROD	10.00	WM-15	EJECTOR	3.50
WM-36	RECOIL ROD SPRING	5.00	WM-44	EJECTOR SPRING	1.25
WM-22	RECOIL ROD BUSHING	8.50	WM-34	EJECTOR DETENT BALL	1.25
WM-19	FIRING PIN	7.50	WM-32	EJECTOR STOP PIN	Discontinued
WM-37	FIRING PIN SPRING	1.75	WM-46	REAR SIGHT	35.00
WM-4	EXTRACTOR	11.00	WM-47	FRONT SIGHT	14.00
WM-28	EXTRACTOR PIN	1.25	WM-45	GRIP LEFT	20.00
WM-38	EXTRACTOR SPRING	1.25	WM-45	GRIP RIGHT	1.25
WM-8	HAMMER	15.00	WM-33	GRIP SCREWS (4)	EA.
WM-12	HAMMER STRUT	4.25	WM-10	MAGAZINE LATCH	18.00
WM-23	HAMMER PIVOT PIN	1.25	WM-18A	MAGAZINE LATCH RETAINER	1.75
WM-24	HAMMER STRUT PIN	1.25	WM-18B	MAGAZINE LATCH SPRING	1.25
WM-39	HAMMER SPRING	1.75	WM-17	MAGAZINE BODY	16.00
WM-3	SEAR	Gsmth Only	WM-17A	MAGAZINE SPRING	5.00
WM-25	SEAR PIN	1.25	WM-17B	MAGAZINE FOLLOWER	4.50
WM-40	SEAR SPRING	1.75	WM-17C	W/PLUNGER & SPRING	4.50
WM-9	TRIGGER	13.00	WM-17D	MAGAZINE FLOORPLATE	4.50
WM-26	TRIGGER PIVOT PIN	1.25	WM-	MAGAZINE FLOORPLATE RETAINER	33.00
WM-5	SLIDE STOP	16.00	WM-14	MAGAZINE COMPLETE	3.75
WM-35	SLIDE STOP PLUNGER	2.00	WM-31	SLIDE STOP PLATE	1.25
WM-41	SLIDE STOP PLUNGER SPRING	1.25	WM-31	SLIDE STOP PLUNGER RETAINING PIN	1.25
WM-16	DISCONNECTOR	7.25	WM-27	DISCONNECTOR SCREW	1.25
WM-30	DISCONNECTOR STOP PIN	1.25		SHIPPING & HANDLING CHARGE	4.00

PLEASE SEND PAYMENT IN FULL, including shipping costs) **ALONG WITH YOUR WRITTEN ORDER WHEN ORDERING PARTS.**
(Checks or Money Orders Accepted)

ARCADIA MACHINE & TOOL, INC. — 6226 Santos Diaz, Irwindale, CA 91702 — (818) 334-6629

(Prices subject to change without notice.)

WARRANTY STATEMENT

BASED ON MAGNUSON, MOSS WARRANTY ACT., *AMT* offers no expressed warranty on its product line. *AMT* does recognize its obligation concerning implied warranty. *AMT* will continue to stand behind its products as it has in the past. *AMT* products will be serviced for a period of one year from date of retail purchase, for defects of material or workmanship, at no charge to the purchaser. Be sure to retain your sales slip as proof of purchase date when making a claim.

This instruction manual should always accompany this firearm and be transferred with it upon change of ownership.